



Viewing OEE Alert on a Large Screen TV

Recommendations

This is a full Windows 10 computer that connects directly to the TV via the HDMI port. The computer has wireless networking. It is from Lenovo.

Ideacentre Stick 300

The Lenovo™ ideacentre™ Stick 300 is a pocket-sized device that transforms any display into a Windows PC ideal for enjoying media, browsing the web or giving presentations. This device brings versatility and utility to a new level wherever and whenever you need it.

[Explore Features](#) [View Specs](#)

Starting at **\$99.99**

[View Models](#)

★★★★★ 3.7 | (23)



You will need something to connect to the Ideacentre Stick to configure the browser and get things working.



Lenovo Handheld Keyboard and Mouse (Backlit)

Part number:888011668

★★★★★ 5.0 | (5)

[Write a review](#)

Web Price:

\$59.99

Ships in greater than 5 weeks**

Putting it together:

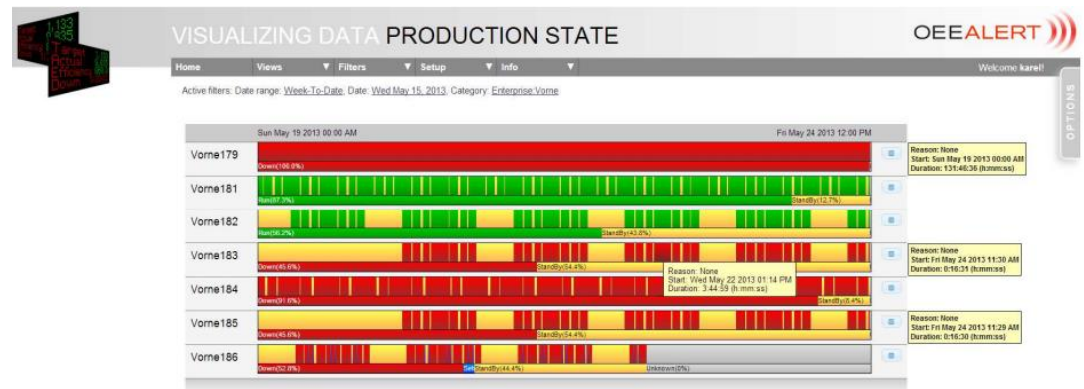
Recommend using a Windows computer that is connected to the big screen TV.

Use Google Chrome as that is the most friendly for displaying web pages.

Use Google Chrome Revolver Tabs app to rotate between different tabs in the browser.

<https://chrome.google.com/webstore/detail/revolver-tabs/dlkn0oajieciikpedpldejhijacnbd?hl=en>

Follow this link to maximize the screen real estate for OEE Alert -
http://oeelert.com/images/Brochures/OEE%20Alert-ToolTip_Kiosk_TV_Mode.pdf



Contact Us

- We extend the capabilities of your Vorne XL devices through Data Collection, Visualization, Integration and Reporting
- We provide sales and support for OEE Alert.
(www.OEEAlert.com)
- We provide support for the **OEEStudio** reporting software (designed specifically for the data captured from the Vorne XL devices).

Deb-Tech Systems, Inc. ~ 800.975.3181 (x2) Debbie.Olk@debtechsystems.com

www.DebTechSystems.com